



# CHATHAM I

**SQUARE FOOTAGE 1,714**

3 Bedrooms 2.5 Bathrooms



**ELEVATION A**

**Exterior Shown with Standard 7/12 Roof Pitch  
Shown with Optional Exterior Features**

These are artist renditions for sales purposes only. Refer to working drawings for actual dimensions.  
© 2022 Nationwide Homes, Inc. All Rights Reserved.





## CHATHAM I

**Total Finished Area:**  
1,714 Sq. Ft.

857 Sq. Ft. Finished  
857 Sq. Ft. Finished

### Dimensions:

27'8"W x 34'0"D

**3 Bedrooms**  
**2.5 Bathrooms**

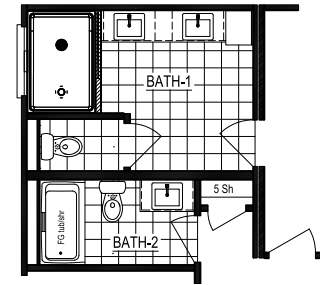
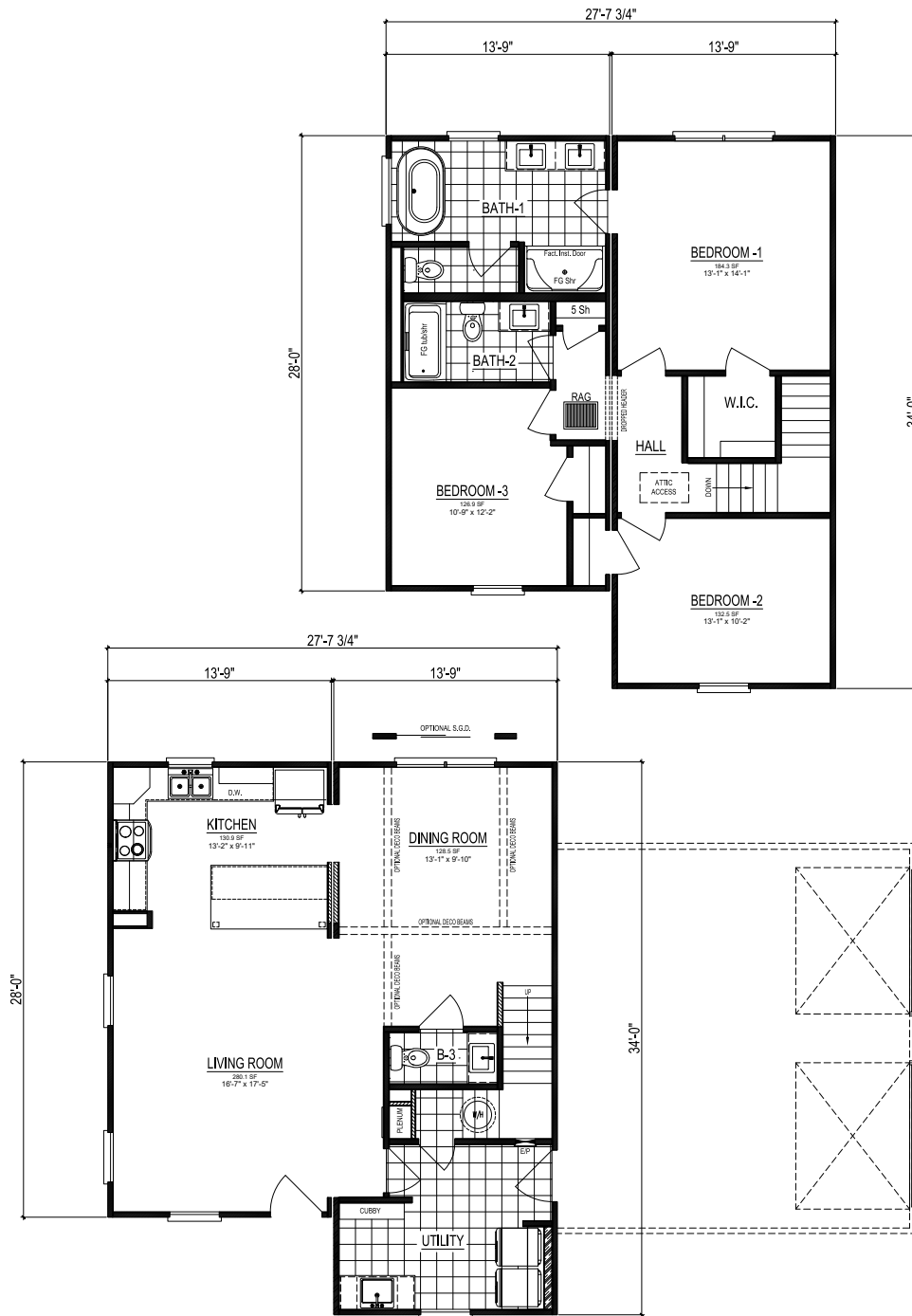
- Generous Utility Room
- Utility Cubby & Bench
- Over-sized Kitchen Island
- Rectangular Lavatory Sinks
- Free-Standing Bathtub
- Walk-in Closet
- Hall Linen Closet



nationwide-homes.com

facebook.com/nationwidehome

instagram.com/nationwidehomes



Optional Master Bath



### Shown with Optional Interior and Exterior Features

These are artist renditions for sales purposes only.

Refer to working drawings for actual dimensions.

© 2022 Nationwide Homes (Spring 2022)

